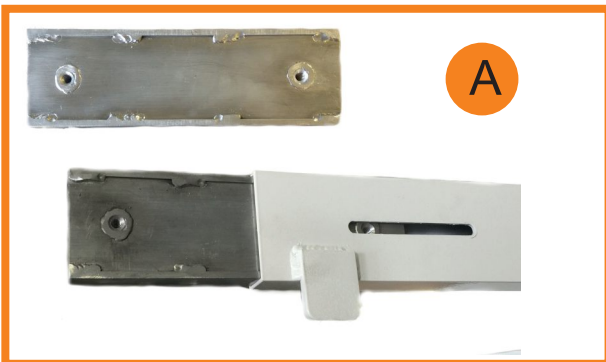
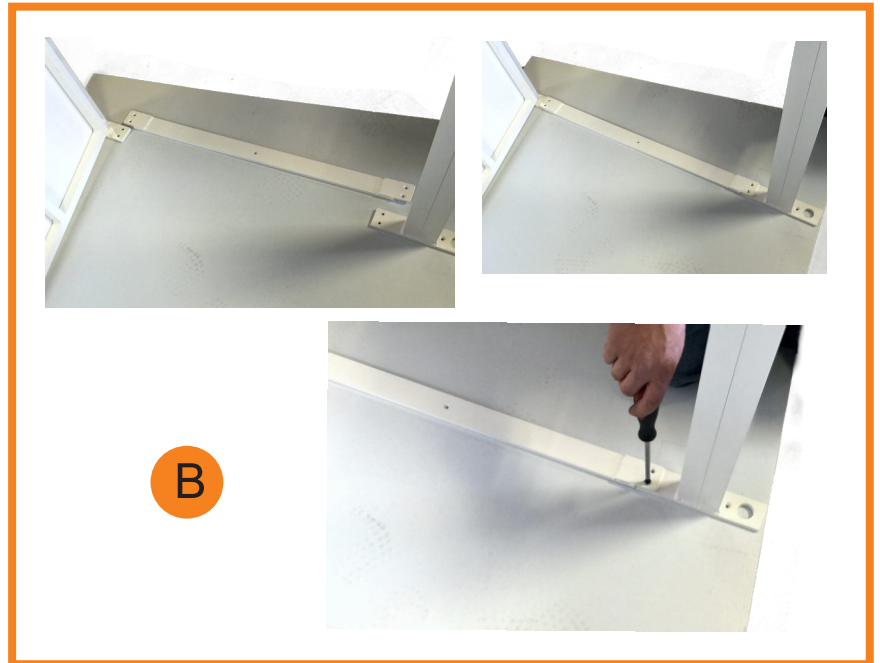




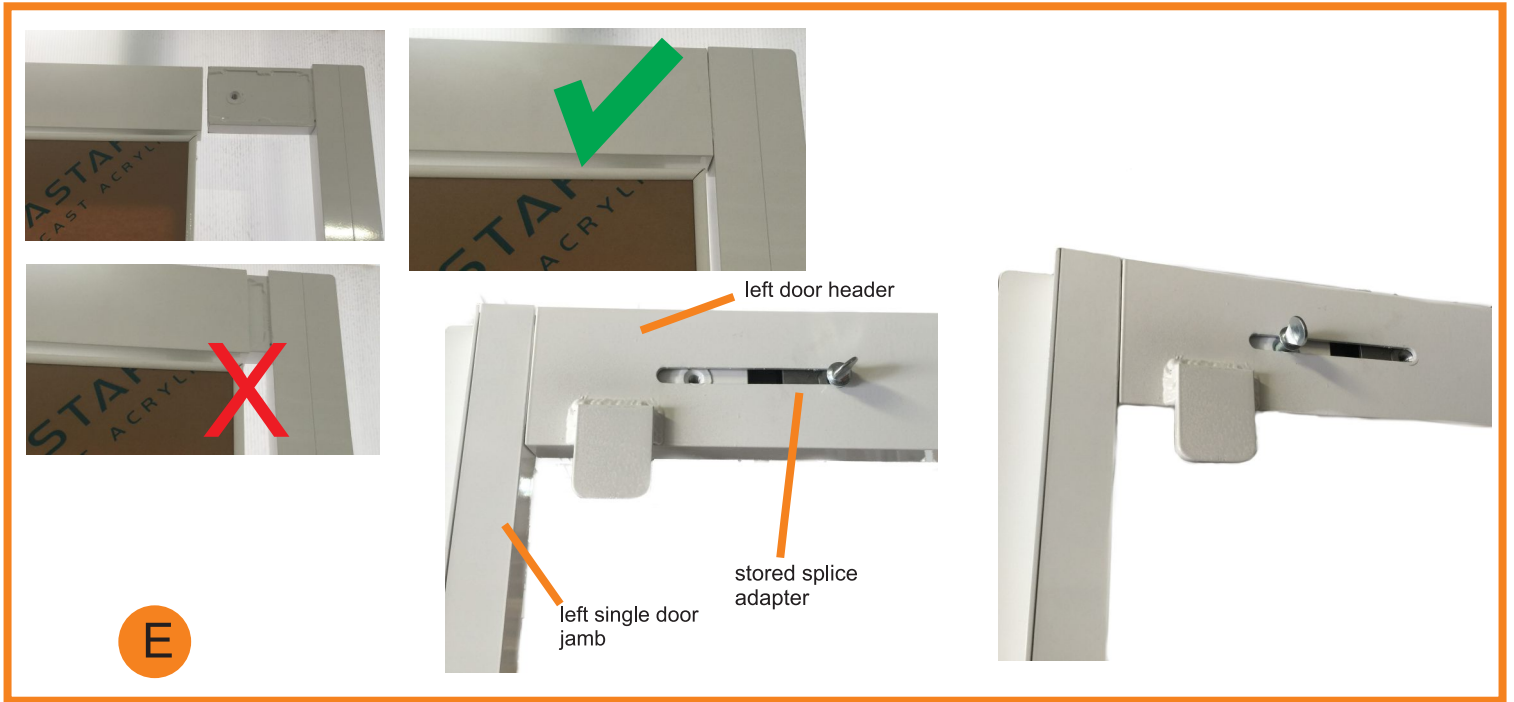
**MODEL: Double Door**  
**Optional Accessories Shown**

To assemble double door: Insert header splice adapter (Figure A) into one side of the door header, attach thumb screw, then insert opposite side door header together. Secure with thumb screw. Header splice adapter may be stored inside one of the door headers with thumb screws. Next install threshold to bottom of door using counter sunk phillips screws. Same procedure for single door.

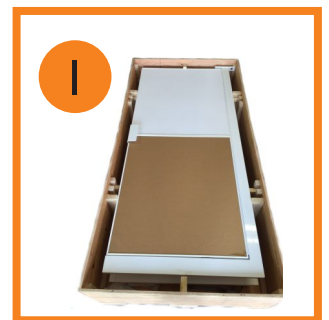
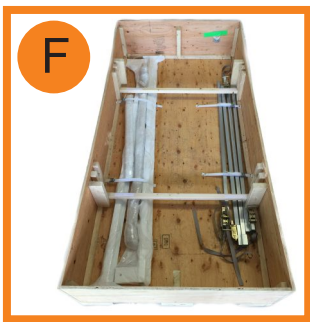
To attach door to tent, insert door left and right door uprights (Figure C) into door frame (Figure D). Ensure ratchets are on the interior side of door and offset to center of door (Figure D). Raise uprights to eave bar of tent and use straps to attach to eave bar or purlin. Attach bottom of door jambs to floor using small stakes or screws (not included). Threshold (Figure B) may be removed once door is set and leveled as long as the door frame is secured to the floor via stake to grass



Assembly of optional single door kit. Single door kits come in left or right configurations. If converting the left door to single door use left door kit (left door jamb, 30" threshold) Remove or store Header Splice Adapter from double door. Insert left door jamb fully utilizing thumb screw (Figure E) Install threshold (Figure B) Install left and right door uprights (Figure D)



Packing in optional shipping/transport box. Load all accessory pieces (door jambs, uprights and thresholds) into bottom of box using included straps. Insert 2 wood load bars (Figure F). Load one door face up (Figure G). Insert 2 more wood load bars (Figure H) then add remaining door face up (Figure I)



### Remove or replace panels

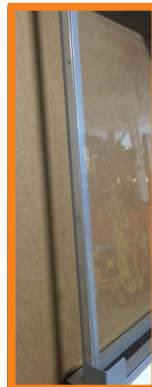
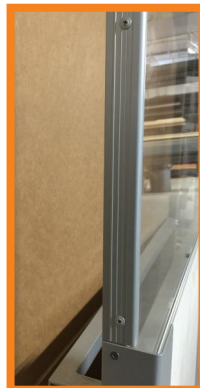
J

K

L

M

Remove track on edge of door for panel to be replaced (Figure J,K) along with the handle (Figure L). Slide out panel (Figure M). Replace panel by reversing the previous steps.



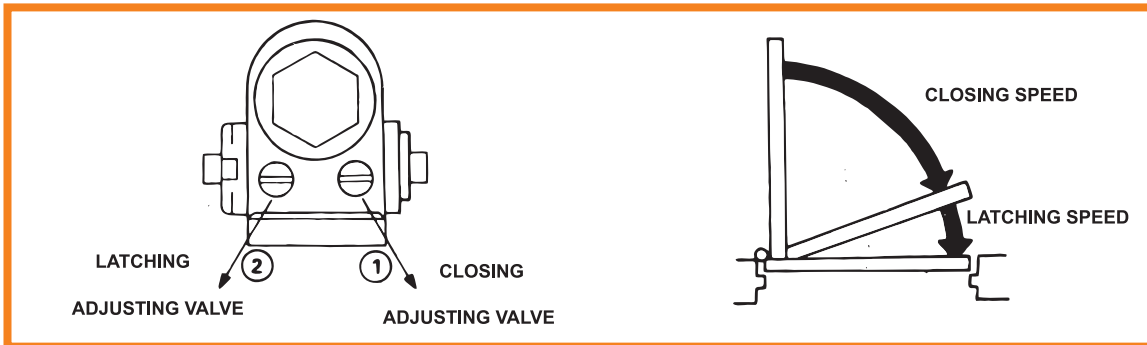
# Door Closer Adjustments

## CLOSING CYCLE

**NOTE:** Closing arcs (“CLOSE” and “LATCH”) are controlled by two(2) separate speed adjusting values adjust the CLOSING speed first, then adjust the LATCHING speed.

1. “CLOSING” speed adjustment is accomplished by full rotations of the speed adjusting valve.
  - Turn the speed adjustment valve CLOCKWISE for a SLOWER CLOSE arc closing speed.
  - Turn the speed adjusting valve COUNTER-CLOCKWISE for a FASTER CLOSE arc closing speed.
2. “LATCH” speed adjustment is accomplished by full rotations of the speed adjusting valve.
  - Turn the speed adjusting screw CLOCKWISE for a SLOWER Latch arc closing speed.
  - Turn the speed adjusting screw COUNTER-CLOCKWISE for a FASTER Latch closing speed.

**CAUTION!!** Do not turn speed adjusting valve more than two(2) full turns counter-clockwise from its factory set position, as two speed adjusting valves could become dislodged from the door closer body, resulting in the loss of internal fluid and failure of the device.



## Parts List:



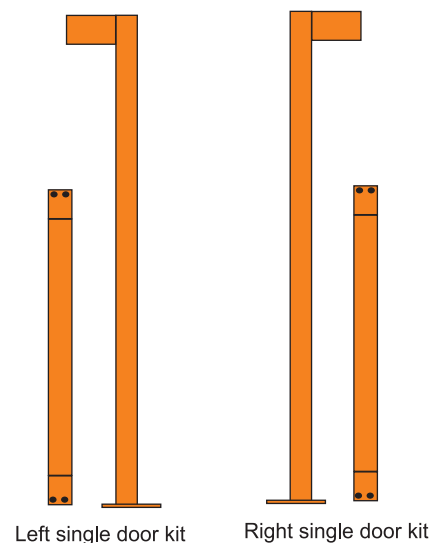
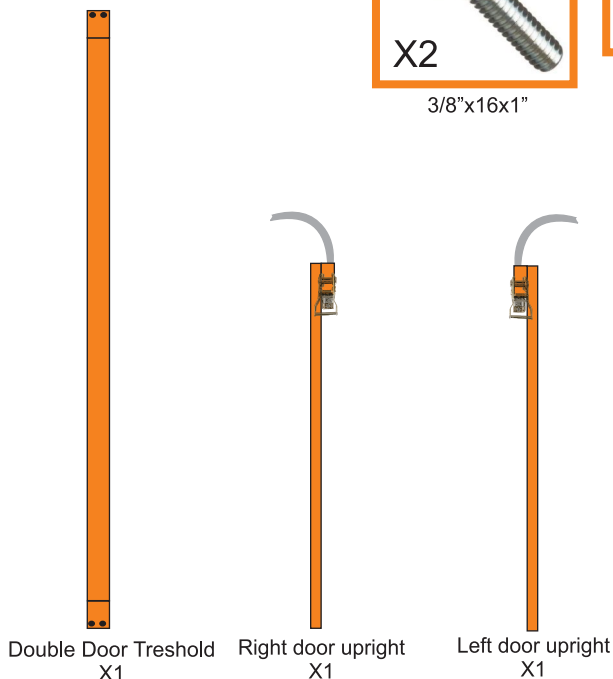
3/8"x16x1"



1/4"x20x1/2"

Note: If converting double door to 2 single doors, in addition to the single door kit you will need an additional left and right upright.

Optional single door kits:



## LIMITED WARRANTY

B&R Innovations, LLC (B&R) warrants this product to be free of defects in material and workmanship during the warranty period. Our warranty obligation is to provide a replacement for a defective original part if the part is covered by the warranty, after we receive a proper request from the warrantee (you) for warranty service.

### Who may request service?

Only a warrantee may request service. You are a warrantee if you purchased the product from B&R or from an authorized distributor AND B&R has been fully paid.

### What is an “original part”?

An original part is a part used to make the product as shipped to the warrantee.

### What is a “proper request”?

A request for warranty service is proper if B&R receives: 1) a photocopy of the Customer Invoice that displays the shipping date; AND 2) a written request for warranty service including your name and phone number. Send requests by any of the following methods:

Mail, Fax or Email

B&R Innovations, LLC

[Info@BandRinnovations.com](mailto:Info@BandRinnovations.com)

Fax: 917-677-8449

999 S. Oyster Bay Rd, Ste. 401

Bethpage, NY 11714

In the written request, list the parts believed to be defective and include the address where replacements should be delivered.

### What is covered under the warranty?

After B&R receives your request for warranty service, an authorized representative will contact you to determine whether your claim is covered by the warranty. Before providing warranty service, B&R may require you to send the entire product, or just the defective part or parts, to its facility in Bethpage, NY. The warranty covers defects in the following original dynamic components: motors, hydraulic pumps, electronic controllers, switches and cylinders. It also covers defects in original parts that wear under normal usage conditions (“wearing parts”), such as bearings, hoses, wheels, seals, brushes, and batteries.

### How long is the warranty period?

The warranty period for original components is 90 days. The warranty period begins on the date when B&R ships the product to the warrantee. If the product was purchased from an authorized distributor, the period begins when the distributor ships the product. B&R may extend the warranty period for products shipped from authorized distributors by up to 30 days to account for shipping time.

### If a defective part is covered by the warranty, what will B&R do to correct the problem?

B&R will provide an appropriate replacement for any covered part. An authorized representative of B&R will contact you to discuss your claim.

### What is not covered by the warranty?

1. Labor;
2. Freight;
3. Occurrence of any of the following, which automatically voids the warranty:
  - Product misuse;
  - Negligent operation or repair;
  - Corrosion or use in corrosive conditions;
  - Inadequate or improper maintenance;
  - Damage sustained during shipping;
  - Accidents involving the product;
  - Unauthorized modifications: DO NOT modify the product IN ANY WAY without first receiving written authorization from B&R. Modification(s) might make the product unsafe to use or might cause excessive and/or abnormal wear.

### Do any other warranties apply to the product?

B&R makes no other express warranties. All implied warranties are disclaimed to the extent allowed by law. Any implied warranty not disclaimed is limited in scope to the terms of this Limited Warranty.